



# ELECTRIC VEHICLE CHARGING SOLUTIONS

ADAM



# ADAM Ventures LLP

- ❖ At ADAM Ventures, we help brands accelerate time to market, and work with them as an extension of their core operations. We are a micro-consulting agency having a proven track record in helping new ventures / initiatives validate their ideas with the appropriate experts in the field of interest, then form a strategy to bring those ideas into reality. Our focus domains are Electric Mobility Infra, Fintech & D2C Brands.
- ❖ Our team consists of :



**Aditya Dasgupta, Founder – ADAM Ventures LLP**  
<https://www.linkedin.com/in/adityadasgupta/>



**CA Amrish Thakker – CFO, ADAM Ventures LLP**  
<https://www.linkedin.com/in/amrish-thakker-8a566166/>



**Girish Aralikatti – Technical Advisor, ADAM Ventures LLP**  
<https://www.linkedin.com/in/girish-aralikatti-a870a34/>

# Company Introduction



EV Charger Distributor with complete in-house capability of Product , Software & App development



End 2 End EVSE service provider - Transformer / PSS , Electrical distribution , EV chargers & Software systems



Product upgradation considering Future technology changes & necessary adaptation in current design



Expert in providing optimized, reliable Techno-commercial EV Charging solutions



Provide nationwide Safe, Reliable & Robust electric vehicle charging solutions & Service support

# Manufacturer Focus & Strength



- ❖ Evigo Bijlify, with its in-house manufacturing and software capabilities, aims to work together with local governments & other stakeholders at multiple levels to take country's EV journey to its desired destination
- ❖ Evigo Bijlify boasts a complete range of charging infrastructure from 3.3 kW to 120 kW that are in line with global standards and compatible with 2, 3 and 4 wheelers across brands
- ❖ The mobile app and CMS solutions allow for easy control of user management, time slot booking payment modules and customer data



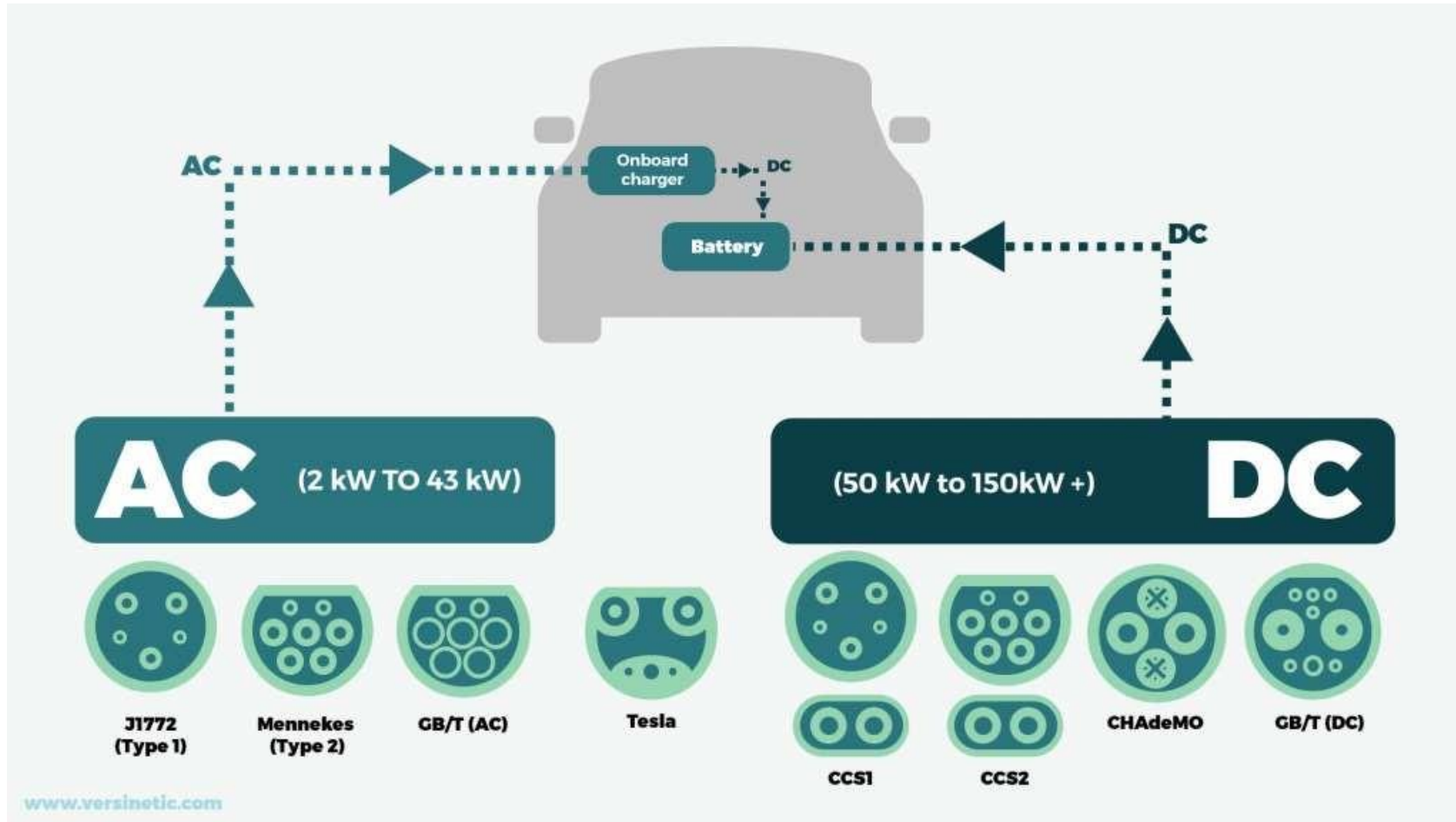
# CHARGING TECHNOLOGY

ADAM

(Adam)  
VENTURES LLP

# Different Types of Charging Guns

- Charging Guns are fixed into the Charger & can be used based on EV charging socket type



# Evigo Bijlify PRODUCT Range

ADAM



# AC Charger - AC001



- ❖ 3.3kW - 9.9kW smart chargers with IEC 60309 connector
- ❖ Conventional 16A socket can also be provided  
Protections: O/C, S/C, earth leakage, surge protection, input Over/under voltage & emergency stop .
- ❖ Robust to all weather and environmental conditions
- ❖ Smart Connectivity: GPRS, RFID ( optional )
- ❖ Charge mode set up: Automatic, electricity units, amount and time.
- ❖ Compatible with Tata Tigor (Old), Mahindra e2o & 2/3 Wheelers



# AC Charger - Type 2



- ❖ 7kW - 43kW smart chargers with Type 2 Connector
- ❖ Protections: O/C, S/C, Over- temp, reverse battery connection, earth leakage and surge protection.
- ❖ Robust to all weather and environmental conditions
- ❖ Smart Connectivity: Ethernet, Wi-fi, GPRS, RFID, QR Code, OCPP 1.6
- ❖ Charge mode set up: Automatic, electricity units, amount and time.
- ❖ Compatible with Audi e-tron, Mercedes Benz EQC, TATA Nexon EV, MG ZS EV, Hyundai Kona

# DC Charger



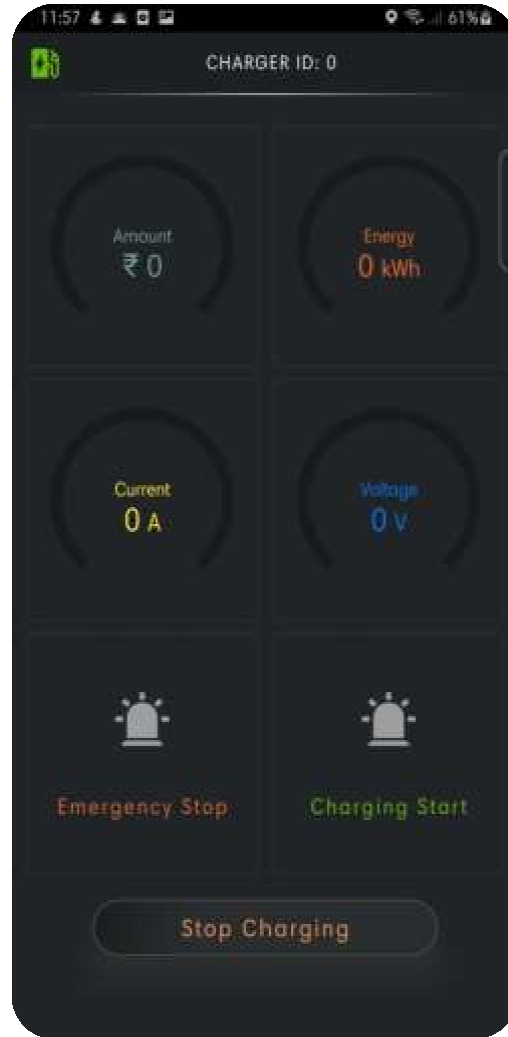
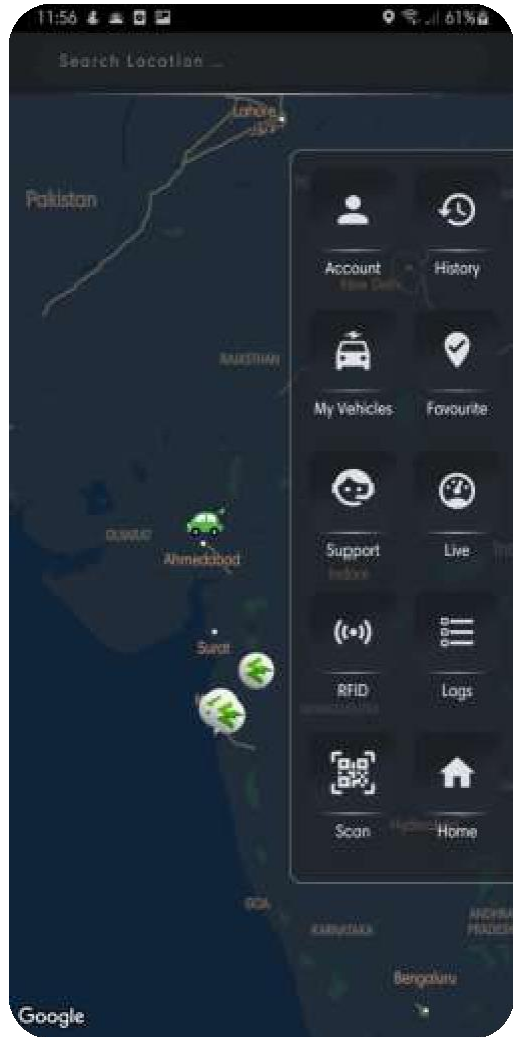
- ❖ 30kW- 120kW DC smart charger with CCS2, CHAdeMO Connector
- ❖ Protections: O/C, S/C, Over-temp, reverse battery connection, earth leakage and surge protection.
- ❖ Robust to all weather and environmental conditions
- ❖ Smart Connectivity: Ethernet, Wi-fi, GPRS, RFID, QR Code, OCPP 1.6
- ❖ Charge mode set up: Automatic, electricity units, amount and time.
- ❖ Compatible with Audi e-tron, Mercedes Benz EQC, TATA Nexon EV, MG ZS EV, Hyundai Kona & Toyota, Maruti EVs

# Stand Alone 3 in 1 Charger



- ❖ 60kW - 150kW DC with CCS2, CHAdeMO & 11 kW - 43 kW AC with Type 2
- ❖ Protections: O/C, S/C, Over- temp, reverse battery connection, earth leakage and surge protection.
- ❖ Robust to all weather and environmental conditions
- ❖ Smart Connectivity: Ethernet, Wi-fi, GPRS, RFID, QR Code, OCPP 1.6
- ❖ Charge mode set up: Automatic, electricity units, amount and time Compatible with Audi e-tron, Mercedes Benz EQC, TATA Nexon EV, MG ZS EV, Hyundai Kona & Toyota , Maruti EVs

# Software Solutions - Mobile App



- ❖ OTP based Authentication with SSO
- ❖ Detecting User live location with fast refresh
- ❖ Station Map view with Navigation feature and List View
- ❖ QR Code scan for easy Charger selection
- ❖ Reservation and Time slot booking
- ❖ Cost and Time Estimation
- ❖ Start and Abort Charging sequence
- ❖ Single click - Email Invoice

# Software Solutions - CPMS



- ❖ Web based Model - Scalable and Modular
- ❖ OCCP and HTTPS based driver
- ❖ Dashboard for quick overview
- ❖ SMS, Whatsapp, Email, Push Notifications for Alerts
- ❖ Geo-Map view with Live status Indication and Single Click Faceplate (Station Information)
- ❖ Multi-level User Management
- ❖ Charger real time Monitoring, Health and Diagnosis check
- ❖ Customized reporting

# Software Solutions - CPMS



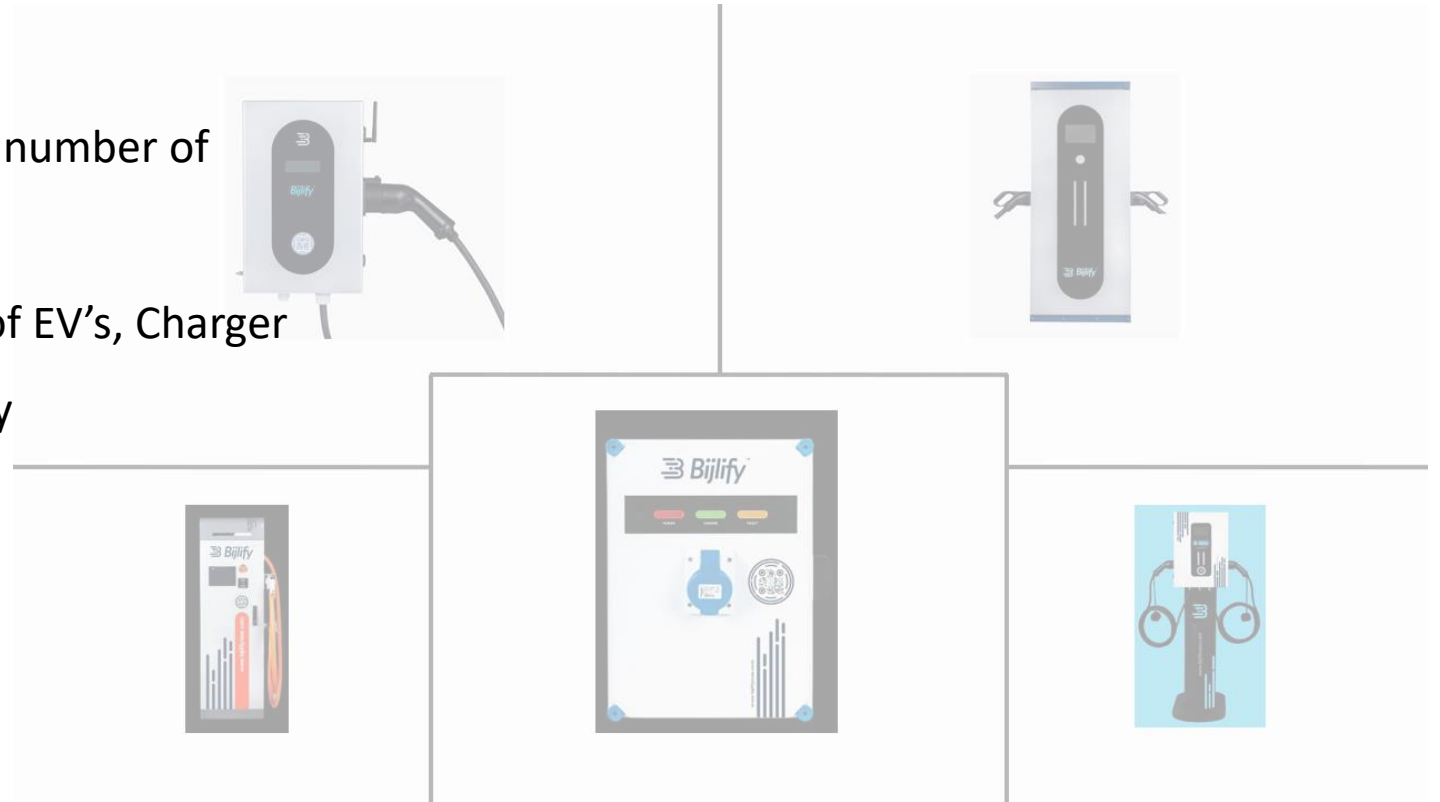
CMS ( Centralized Monitoring System ) to monitor :

- ❖ Charger usage tracking (Daily/Weekly/Monthly) Statuses of Charger (In-use/ Standby/ Disabled)
- ❖ All Charging operations record backup
- ❖ Billing to users
- ❖ Manage Charging rates

# Installation Provision by Customer



- ❖ Electricity Meter connection ( preferably separate for EV to avail benefits offered by DISCOMS )
- ❖ Power distribution system as per required number of Chargers
- ❖ Space provision for Parking & movement of EV's, Charger installation etc. Required Civil work , if any
- ❖ NOC



# After Sales Service



- ❖ Service network is available across India
- ❖ Based on Charger volumes, dedicated Service partner can be assigned
- ❖ Fault detection & diagnosis can be done through Web portal, if connected over cloud network (Use of technology for faster service support )
- ❖ Dealer team can be trained to provide first level issue resolution support
- ❖ For EV Charger & Software, AMC can be signed between Evigo Bijlify & concern authority







THANK YOU

